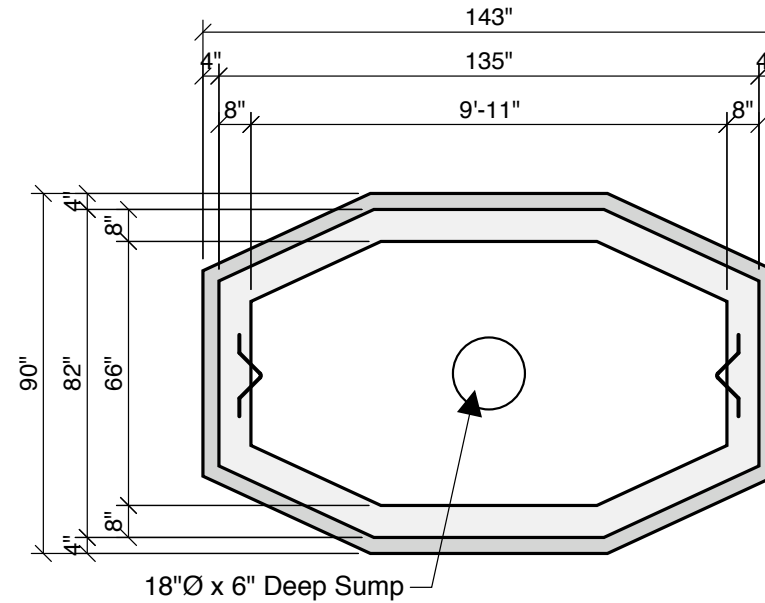


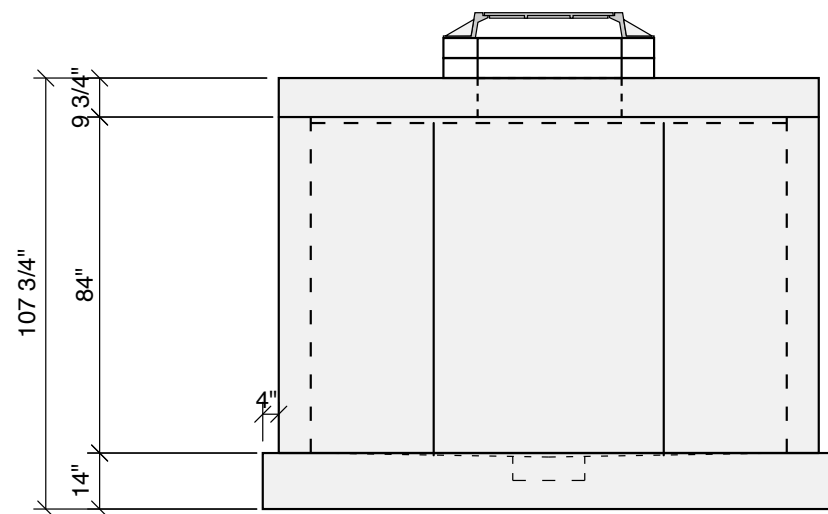
Cover View



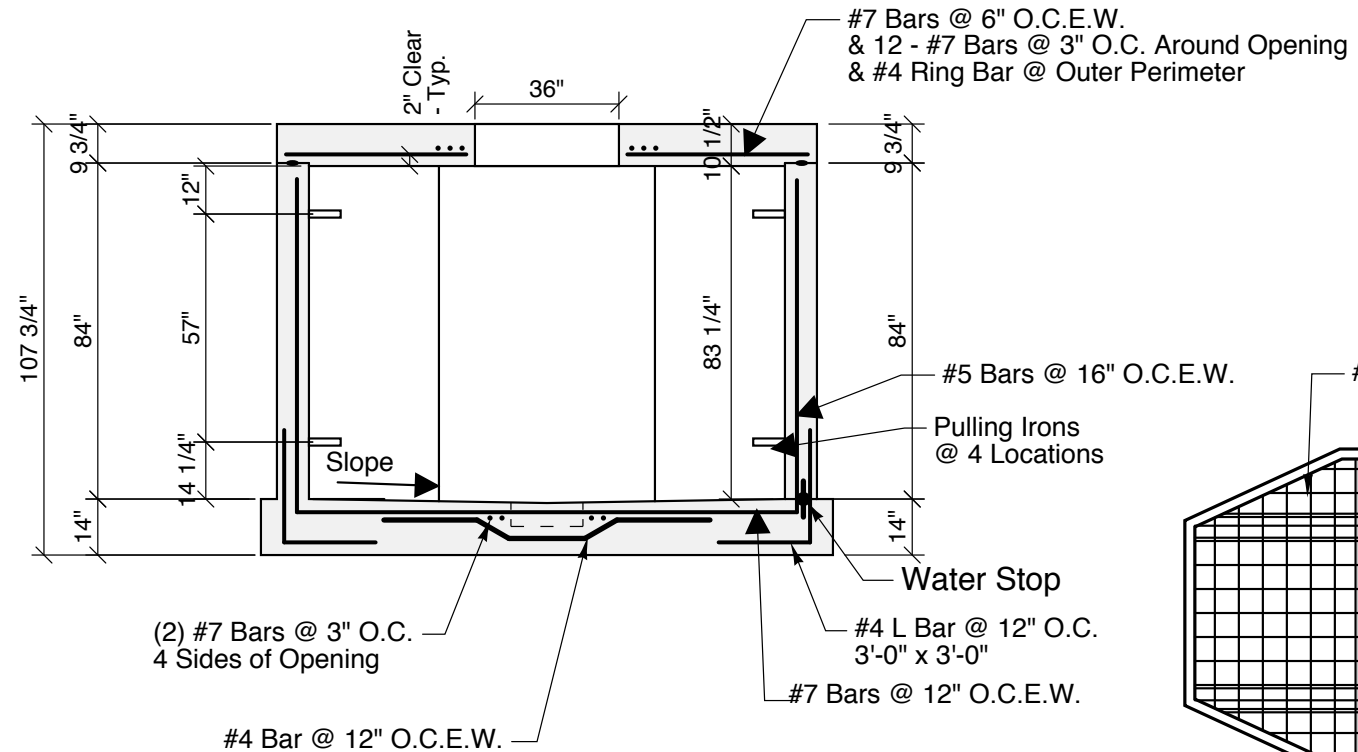
Section @ Base

General Notes:

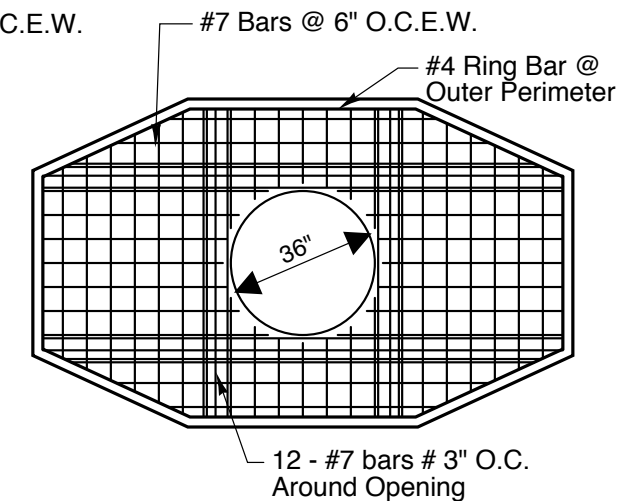
- Concrete - 5,000 PSI W/ 5 To 6% Air
- HS20 Wheel Load Design
- Pulling irons by Penn Insert
- Joint Sealer - EZ-Stick (1" Dia.)
- Covers to be marked - "ELECTRIC" By Others
- Erection Lifters - 4 Each 4 Ton Burks In Each Section
- Weights
Base & Walls - 34,300
Cover - 6,700
- Reinforcement - Grade 60 Rebar Or WWF Equiv. Tie All Rebars Joints No Welding Allowed



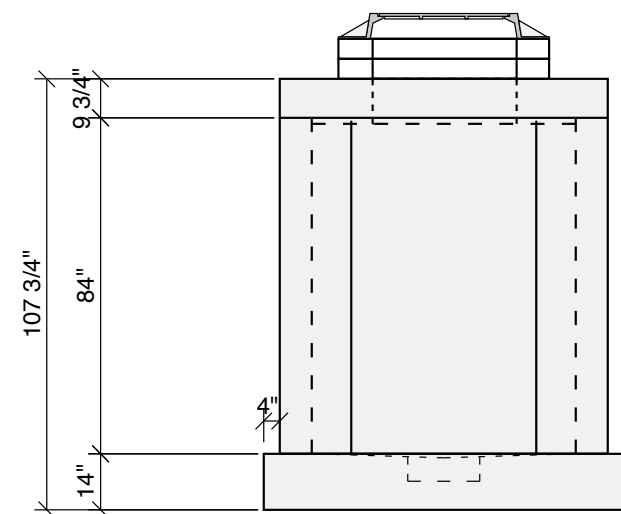
Side View



Section Thru Manhole



Cover Reinforcement



Typ. End View

2 Way Power Manhole
5'-6" x 9'-11" x 7'-0" Deep

Crest Precast, Inc.		La Crescent, MN & Barneveld, WI	
800-658-9045			
Scale		Drawn By:	KGT
Date		Revision	
Project: Standard 2 Way Precast Manhole			
Contractor:		Drawing Number	1