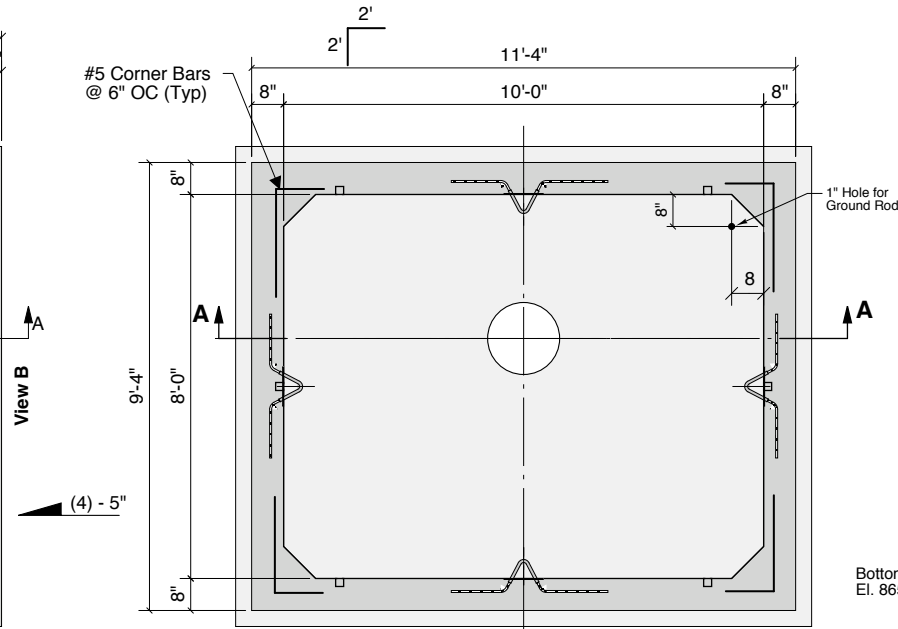
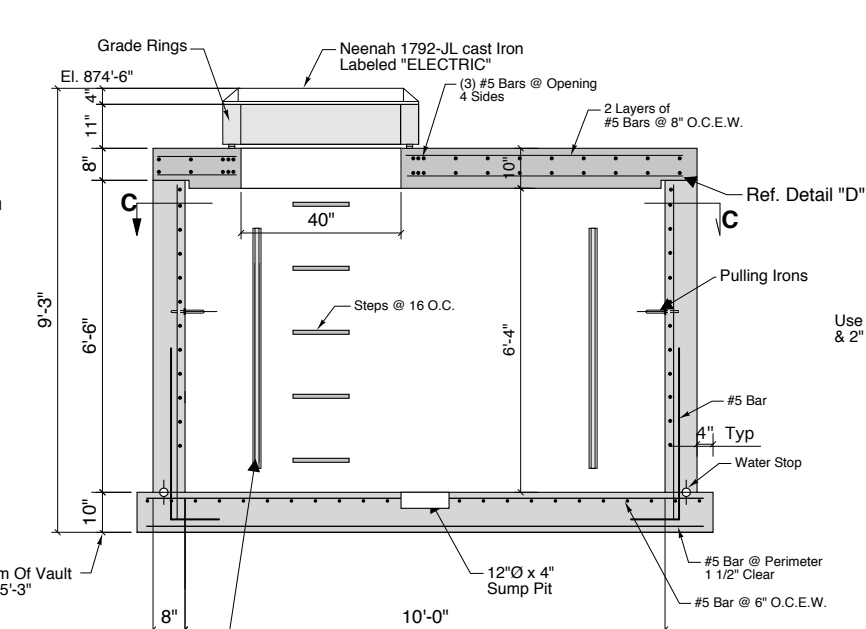


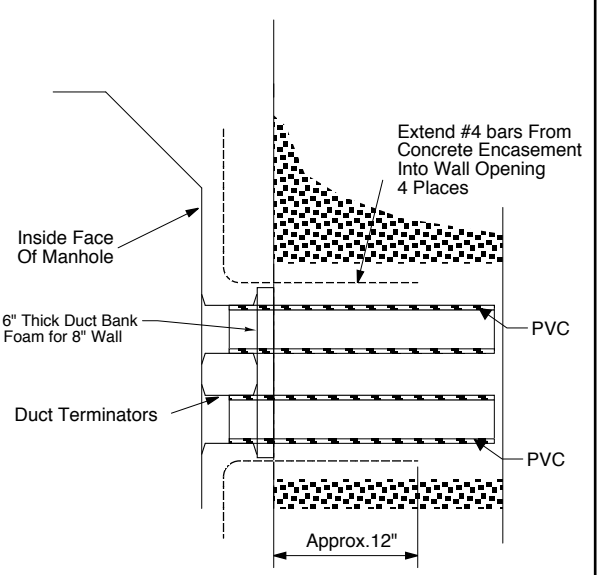
**Top View**



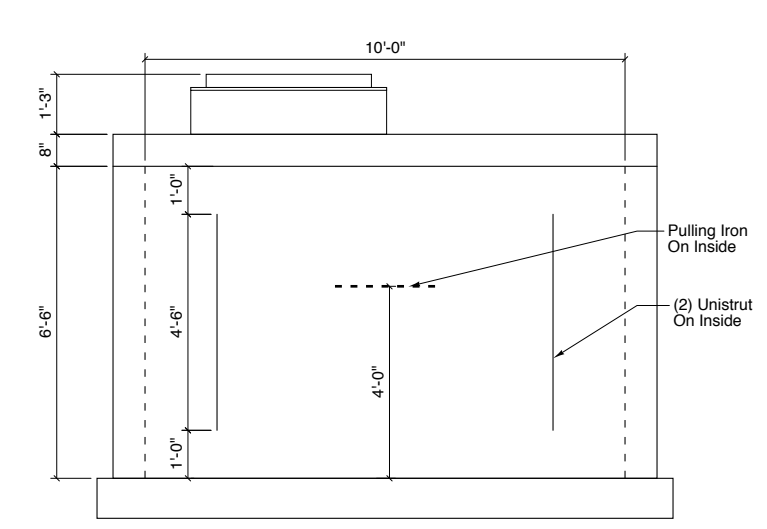
**Bottom View**



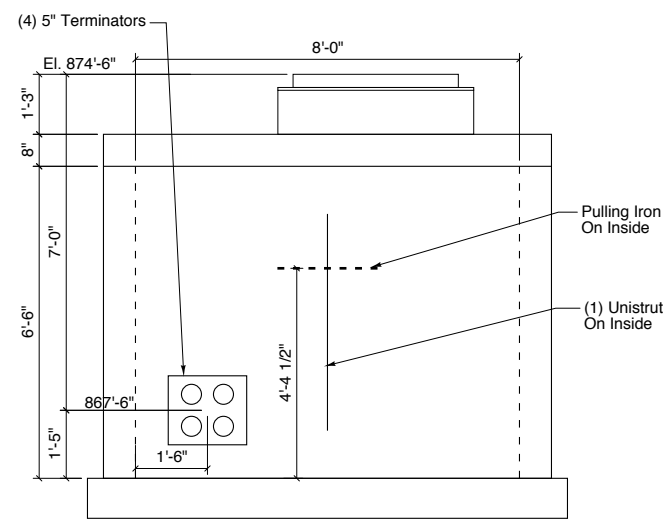
**Section A-A**



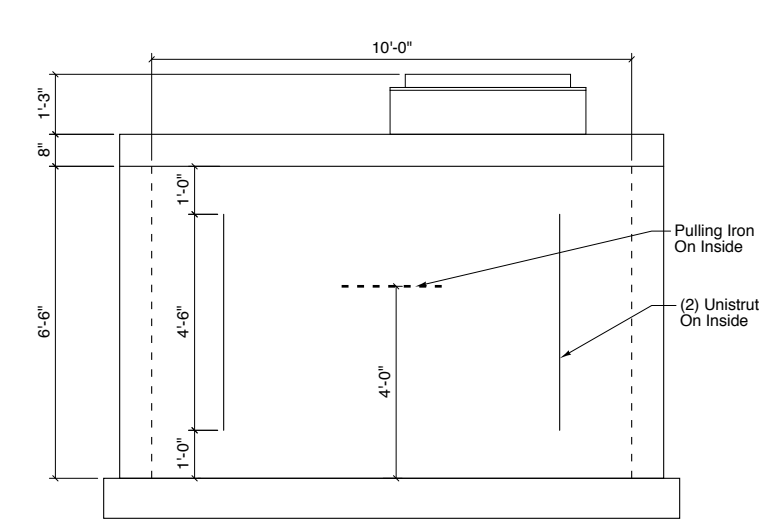
**Ductbank Entrance Typical Detail**



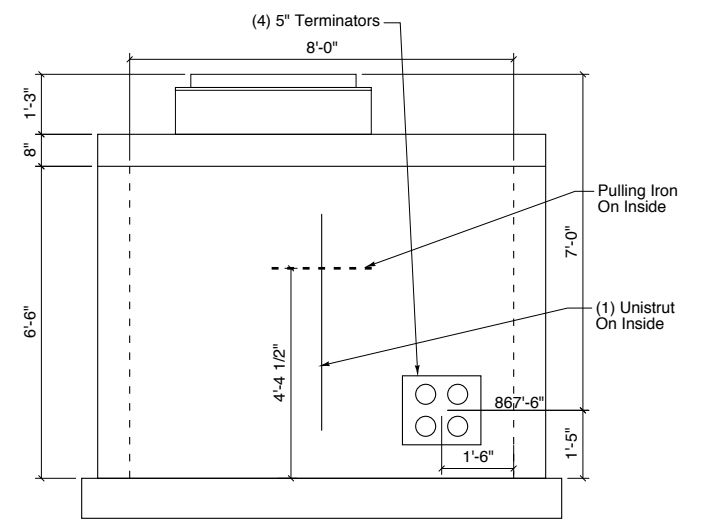
**Wall A**  
Outside Looking In



**Wall B**  
Outside Looking In



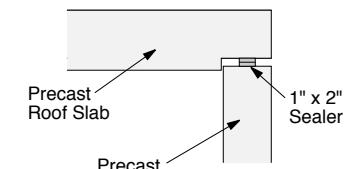
**Wall C**  
Outside Looking In



**Wall D**  
Outside Looking In

- General Notes:**
- Concrete - 5,000 PSI
  - HS20 Wheel Load Design
  - Sumps & Pulling irons by Penn Insert
  - Joint Sealer - EZ-Stick
  - Optional Tremproof 60 Exterior Waterproofing
  - Pulling Irons - By Penn Insert w/ Plastic Cover
  - Reinforcement - #5 Bars @ 8" O.c.E.w. Grade 60 Plain Steel or WWF

**Typ. Electric Vault**  
(10'-0" Wide x 8'-0" Long x 6'-6" Deep)



**Detail "D"**

**Crest Precast, Inc.**  
**La Crescent, MN & Barneveld, WI**  
800-658-9045

Scale	Drawn By: <b>KGT</b>
Date	Revision
<b>Project:</b> 10 x 8 x 6'-6" Electrical Vault	
<b>Contractor:</b>	Drawing Number <b>1</b>