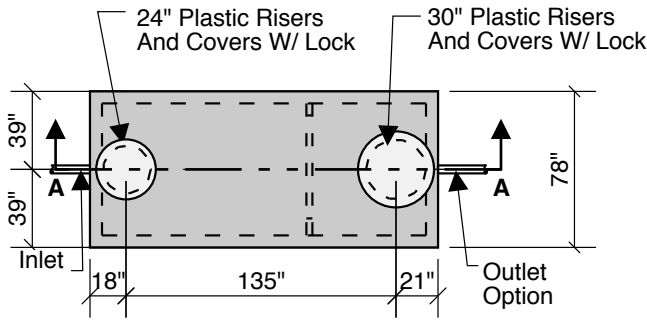


2000 Gallon Processing Tank

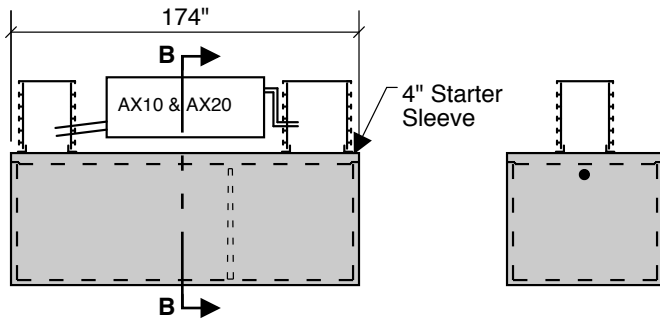
43" LL

48" INLET

COMBINATION SEPTIC - PUMP
ADVANTEX SYSTEM
 AX10 AND AX20 - 5 Bedroom

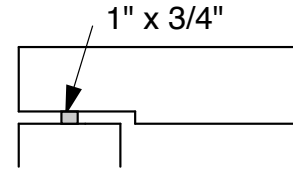


Top View

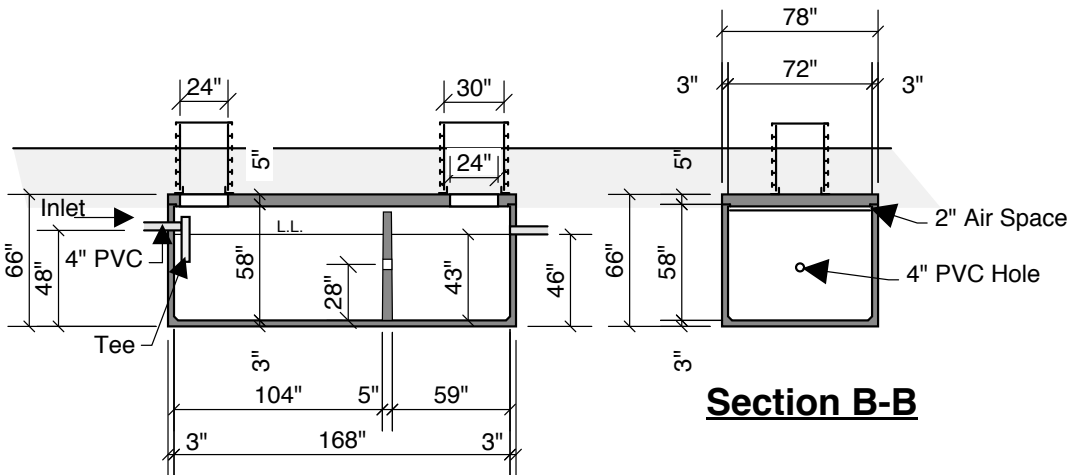


Side View

End View



Typical Cover Detail



Section A-A

Section B-B

Advantes Notes:

- Textile Filter Sits On Top Of Precast Tank
- Concrete - 5,000 PSI Water to Cement Ratio (0.35±)
- Reinforcement - Grade 60 Steel Per ACI 315 & 318
 Complete Steel Reinforcement From Base Thru Walls & Cover
- Loading Criteria - Minimum 500 PSF On Cover
 (Wheel Load 2,500 Lbs)
 Minimum Lateral Loading Of 62.4 PCF From Top Of Ground Surface
- Joint Sealant - High Grade EZ Stick
- Exterior Coating - Riley Bitum.
- Interior Coating - Thoro Seal
- Manhole Risers & Covers - Orenco, ADS Or Ez Riser
- Pipe Boots - Cast-a-Seal By Press Seal Company
- Testing - 24 hour Water Testing Before Shipment
 Testing To Full Height Of Riser

1st Chamber Size 1,393 gal
2nd Chamber Size 790 gal
50.79 G.P.I. in Tank

Crest Precast, Inc.
La Crescent, MN & Barneveld, WI
 800-658-9045

Scale	Drawn By: KGT
Date	Revision
Project: Model: Advantex AX10 & AX20	
Contractor:	Drawing Number